



Boyne Bulletin

BOYNE ISLAND STATE SCHOOL NEWSLETTER

Upcoming Events

Mon	Robotics Club 7:45am Yr 5-6
Mon	Gardening Club 11:10am
Wed	Vocal Club Yr 2-6 8:00am
Wed	Yr 4 Robotics 1 st break
Wed	Yr 3 Music Extension
Thur	Continuing Band 7:50am
Thur	STEM Club 11:10am Yr 4-6
Fri	Beginner's Band 7:50am

FEBRUARY

Tues 4 th	Parent meetings- 2B, 2L, 2M, 3C, 3K, 4M, 45V, 5H, 5K, 6J, 6R 6S
Wed 5 th	Vocal Club Yrs 2- 6: 8am
Thur 6 th	Port Curtis Netball trial
Mon 10 th	PC AFL trials
Tues 11 th	P&C Meeting AGM 6:30pm
Thur 13 th	PC Hockey trials
Thur 13 th	PC Basketball trials
Tues 18 th	PC Squash trials

MARCH

Thur 6 th	PC Football trials
Thur 6 th	Prep Wet Morning
Fri 7 th	PC RL (11&12yo) trials
Tues 11 th	P & C Meeting 6:30pm
Thur 13 th	PC Touch trials
Mon 17 th	Parent Interviews start
Wed 19 th	Yr 3 & 5 NAPLAN
Fri 28 th	PC RL (10yo) trials

APRIL

Tues 1 st	School Photos
Wed 27 th	PC softball
Fri 4 th	Grandparents Morning 9am
Fri 4 th	Last Day Term 1
Tues 22 nd	First day -Term 2
Tues 22 nd	Cross Country

Principal's Message

Welcome to the 2025 school year! It marks my 35th year in state education, 25 years as a Principal and 16 ½ years with the honour of leading Boyne Island State School. It is an exciting year with opportunities building on our previous efforts.

Our curriculum is based on our great teachers aligning the way they do their work. Our literacy work is heavily supported with additional teacher aide and teacher support. It means that ALL students get supported for work at their level. In 2025, The Prep to Year 2 are continuing with the MultiLit program on how the whole class is taught and intervention programs for Year 1 to 5 are heavily aligned to that work.

What really distinguishes us as a school is that we also offer a wide range of extra curriculum opportunities. We have a holistic education. We will continue to develop literacy and numeracy but do not 'teach to the test' (NAPLAN). We let those tests reflect where the kids are at and inform our programs. i.e. they are useful to inform great teaching not the end-product that we aspire.

We aspire for all students to be STRIVING, THINKING, CREATING. They are the actions that we think it takes to be "a healthy mind in a healthy body". What we value in our actions is showing **Respect**, being **Safe** and being **Responsible**.

In developing a successful learning culture with well-behaved students there are three things students need to be successful learners:

- A) Work at their level
- B) Respect and trust in their teacher
- C) Friends

I must praise and highlight the commitment of staff for the start to our new school year and the enthusiasm of students. It has been a smooth start with parents supporting our processes.

School Leader Induction

Congratulations to our 2025 School Leaders who were inducted. They will be outstanding leaders and role models.

HOUSE CAPTAINS	CULTURAL LEADERS	SCHOOL CAPTAINS
POSSUMS (yellow)	Jaxon Lindeberg-Taylor *	Connor Wilson
Tori Jones *	Quincy McNamara	Milani Clow
Blake Everett	Indi Speers *	VICE CAPTAINS
WOMBATS (green)	Anistyn Sutton	Kobi Burgmann
Akaelia Goodluck	Gabrielle Waller	Maleeya Armitage
Elena Werry	Indira Westbury	BAND CAPTAIN
GOANNAS (blue)	Jai Wilkings	Abigail Hicks
Mia Robinson	ACKNOWLEDGEMENT OF COUNTRY *	Blake Lambert
Finn Sheppard	Jaxon Lindeberg-Taylor	VOCAL CAPTAIN
	Indi Speers	Mia Stanaway
	Tori Jones	

P&C

One forum that assists in shaping the strategic direction of our school is the P&C and is vital to ensuring that a school operates effectively. The next P&C meeting is Tuesday 11th February at 6.30pm.

School Council

It takes courage to put yourself forward to your peers for consideration to represent them when an election is used to decide representation. The School Council has a vacancy for another parent and staff representative to replace members whose tenure is finished. Tenure is for a 2-year appointment. The council critically examines the school data, education research and how that impacts on the school's strategic direction. The Term 1 meeting is Monday 3rd March. Nominations will be sought shortly.



Parent App

Website-www.boyneislandss.eq.edu.au

STUDENT ABSENTEE LINE:

4979 9360

ISSUE NO 1 – TUE 4TH FEBRUARY

Instrumental Music

For 2025, the Instrumental music program will have the Continuing Band on Thursday and Beginners Band on Friday, both at 7:50am.

Tuckshop

Our tuckshop continues its operation based on volunteers with a simplified menu. There is no plan to return to a paid convenor that lost money and required committee members to manage employer requirements. The tuckshop is dependent on volunteers.

The days where tuckshop was an opportunity for children to receive a treat have been surpassed with modern foods and fast-food industries. However, it remains a welcome service and anticipated by students. Its operation should be balanced where the return (financial and service) is in-line with the inputs required.

Staffing

The decision to go with 17 classes needs to be confirmed through the start of year allocation process, sometimes referred to as Day 8. We have 388 students so are proceeding as planned.

EQ has a staffing standard of 25 for P-3 (we average 21.6) and 28 for Yr 4 -6 (we average 24.1). There are 388 students with 32 Preps and 20 other students joining us in 2025.

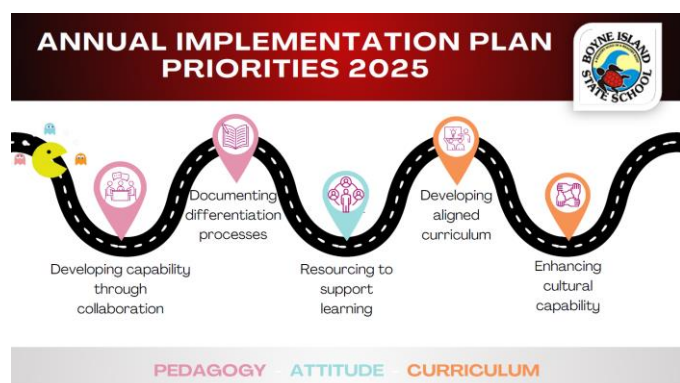
2025

Our school continues to move ahead in a very focussed and sustainable way. The yearly overview sheet will be emailed home shortly.

Our curriculum will continue to build on the literacy and numeracy routines and aligning to Australian Curriculum.

In 2025, school improvement will continue with focuses around 3 key areas.

P – Pedagogy =
A - Attitude =
C - Curriculum



Student Resource Scheme

Very grateful that our school community sees the benefits of being a part of the resource scheme. It supports teachers by ensuring all students have access to the desired resources and makes it cheaper and easier for parents.

By having everyone involved it means staff no longer have to monitor the students not participating are providing their own materials.

Incorporating the book materials into the consumable plan has been well received and continues to be appreciated.

Email Loop

If you haven't received a **class** newsletter via email please confirm your details with the Office. All correspondence goes in duplicate by email and it would be great to know 100% of our parents received the information. Paper copies still go home with the students.



Follow us on Facebook. Search "Boyne Island State School" and look for our logo, "Like" our page and be kept up to date with school news and events.

QSchools App will link you via a smartphone to the school's website information.

Lexia and Mathletics – Home Use

These software programs develop the individual's skill at their own pace and level. Teachers monitor the progress of the students continually so that they can provide assistance depending on each child's individual needs.

- Lexia is reading software that builds skills with explicit practice in phonemic awareness and phonics while promoting gains in vocabulary, fluency and comprehension.
- Mathletics has problems set from the components of the Australian curriculum and when completed a competition area against other students.

Families have the option to follow up with further sessions at home using the Internet. The instruction sheet is available from school or on the webpage.

The use of these online programs requires your child's name, grade, school, and learning data to be stored on off-site, overseas servers.

Technology

The school has been implementing a computer replacement schedule with some success. We have over 65 desktop computers (3 computer rooms) and 91 laptops used in the Prep to Year 6 classes.

We now have 46 iPads to improve accessibility for younger students. The proportions of laptops have been increasing compared to desktops as they take up less space in classrooms and are more flexible in where they can be accessed. Most classrooms have access to a bank of 8 laptops or iPads.

Home Reading

All students are expected to participate in structured home reading.

Auslan/ LOTE (Language Other Than English)

In 2025 Boyne Island will continue offering the subject of Auslan (Australian Sign language), taught to Year 1 to 6 for 30 minutes a week.

It encompasses the broader General Capability of the Australian Curriculum of Intercultural Understanding.

The elements of this capability are

- Explore and compare cultural knowledge, beliefs and practices
- Develop respect for cultural diversity
- Communicate across cultures
- Consider and develop multiple perspectives
- Empathise with others
- Reflect on intercultural experiences

LOTE Exemption

An exemption exists for students who are below the National Minimum Standard in English to receive additional intervention at this time.

As part of some students' Personalised Learning Plans an exemption from LOTE can be granted this year. Students identified as benefitting from additional intervention can be exempted for a half hour of intervention with the teacher aide. The class teacher will discuss with families and will document any agreement to variations of the curriculum, the first time it is enacted.

Mobile Phones

For 2025, mobile phones brought to school need to be handed in at the office. This was always our procedure and some unsafe uses means it is being enacted with diligence. In 2025, Smart Watches will be treated as mobile devices if activated to receive notifications.

Parent Meetings

The parent meetings are to discuss the daily operation of classrooms. Teachers will send home additional information to support the home/school partnership.

Homework Policy

In 2025 we continue our policy regarding homework.

In summary, **all students should be reading daily**. There is the **option to do the on-line programs** or additionally **select from a range of tasks** designed for students to apply their learning. Parents and teachers can discuss and set an alternate program if it is desired according to learning need.



Feedback in reviews was favourable but acknowledged parents had as many views on homework as teachers. The policy attempts to support all parents to implement at home homework regime in accordance with their beliefs. From the school's point of view the only non-negotiable is the daily reading, particularly from a 'read for enjoyment' perspective.

One important aspect for the students, unfinished work that should have been reasonably completed in class, will be set as homework if required. We are saying to our students, work hard at school, use your time well and you only have to do some reading at home unless you choose to do more. Waste your time and you will be reducing your free time by creating unnecessary homework for yourself. That sits well with our expectation that students make an effort at learning. Teachers have been encouraged to use this process if required and refer to administration any ongoing issues for use of afterschool detention.

Uniform / Dress Code

The support of the uniform has got off to a fantastic start. Not many reminders about the School Dress Code have been necessary. Socks are plain white or black- ankle length. Please note that all items, particularly hats and jumpers should be labelled.

The uniform support is appreciated particularly the purchasing of the expected jogging style footwear. And to clarify there is no expectation on the colour of shoes just a preference they be 'black and white' or black. The majority in black/white or black shoes is much appreciated and noticeable. Thank you.

	YES: Black and white sporting shoes with grip and flexibility. Preferred colours for consistency Highly recommended for Student Leaders.
	YES: Highly recommended for Instrumental Music

*Jumpers are not to have 'hoodies'.

Vocal Club

Choir for Year 2 to 6 is being offered as an extra-curricular activity on Wednesday morning 8:00am starting week 2. Mrs Cairns takes this activity.

Music Extension Year 3

An extra half hour of music is offered to both Year 3 classes during school with Mrs Dingle. It is seen as a pre-cursor to the Instrumental Music program that is offered in Year 4. It occurs each Thursday starting Week 3. Invitations to nominate have been given out in class.

Behaviour Management

A commitment is made that letters or emails are sent home or a phone call made when students are referred to the office for behaviour concerns to ensure parents are aware of any developing behaviour issues. Any students failing to respond to interventions from teachers get referred to the Administration. Ideally, we want students to be responsible for their behaviour and considerate of their actions so that they only have positive effects on the learning environment.

Storms

There is a tendency of thunderstorms to descend upon us at going home time! Safety of students is of prime concern and this may mean teachers wait with students in the event of a severe thunderstorm until parents can safely collect their children.

Putting aside the discomfort of getting wet, the greater risk comes from the reduced visibility and impaired traffic conditions that accompany the storms.

In severe storms students will be kept at the undercover area or hall until collection can occur safely.

Who's Who

A very special welcome to our new and first-time students! We have 20 new students in addition to 32 Prep students. My very best wishes go to you for a wonderful year. Most people know their class teacher but not always the other staff available to help and support the school's operations. We trust you will enjoy the safe and desirable learning environment our community offers. Below is a staff list with returning staff and new staff highlighted in bold.

Instrumental Music	Debbie Dingle
LOTE	Tracey Hurst
Science Specialist (Yr 4-6) & PE	Cam Zammit
Music Specialist	Crystal Cairns
Science Specialist (Year 1-3)	
Guidance Officer	Melanie Radloff (Prep,2,4,5) Tanya Wood (Yr 1,3 & 6)
Support Teacher- Literacy & Numeracy	Janelle McHugh
Deputy Principal (Acting)	Kate Mostert
TEACHER AIDE	
Teacher Aide	Amanda Archer
Teacher Aide	Petah Arstall
Teacher Aide	Catherine Devir
Teacher Aide	Leesa Dwan
Teacher Aide	Lennie Larsen
Teacher Aide	Lyness Litzow
Teacher Aide	Lauren Nord
Teacher Aide	Alison Sayre
Teacher Aide	Helen Sternberg
Teacher Aide	Jen Wills
ANCILLARY	
Cleaner	Jai Irvine
Cleaner	Trish Hogg
Cleaner	Kate Shanks
Cleaner	Shannon Weis
Business Services Manager	Stacey Marshall
Administrative Officer	Lucy Armitage
Administrative Officer	Chelsea Sheppard
Schools Officer	Paul Finlay
Computer Technician	Aiden Stubbs

Late Arrival

If you arrive after the bell has gone at 8.50am please call into the office for a late slip. This will ensure your child does not get marked as absent and you will not receive a text message asking to explain absence.

School Photos

Class photos are scheduled for Tuesday 1st April. Students are asked to wear their red school uniform.

School Departure Arrangements

Please ensure that your child knows collection arrangements each day. It is helpful for younger students to have a 'bag tag' indicating daily collection arrangements, particularly if these arrangements vary from day to day or week to week. This means less distress for students. It is very difficult for office staff to take and relay large volumes of messages to children if parents ring each day to get messages to their children prior to the 3 pm bell. We would really appreciate your assistance with this.

Early Departures from Pittsbay Crescent (if desired)
2:55pm Prep students

3:00pm Prep to Year 3 brought to fence lines
3:00pm Year 4 to 6 dismissed from classroom

Medical Forms & Medication at school

Please remember that the office needs to renew medication forms annually. If your child receives any medication at school or needs an asthma inhaler or EpiPen for 2025, forms are to be filled in and medication handed in to the office as soon as possible.

We no longer administer over the counter (OTC) medication such as Panadol or Nurofen to students without a Doctor's authorisation (ie; pharmacy label with both student's and doctor's name on it, a signed letter from a doctor, a medication order from a dentist or an Action Plan signed by a doctor or nurse practitioner).

Principals' power to address hostile persons

Principals have the power to give a verbal direction or written direction to hostile persons to leave and not enter a school premises for a period of 24 hours.

It has been very rare that I have been required to issue a direction, perhaps for a custody or neighbourhood dispute that was brought into the school grounds. However, for the sake of ensuring our community is aware, if a Principal issues a direction to leave and it is ignored then that becomes a police matter.

School being a safe and supportive environment for our students takes precedence over adults seeking to act in a hostile manner. This includes audible foul or abusive language directed at students, staff or other parents.

Major Dates For 2025

Below are some of the whole of school events.

TERM 1

19/3 - Year 3, 5, Tests
28/3 - Student Disco
1/4 - School Photos
4/4 Grandparents Morning

TERM 2

22/4 - **Cross Country**
7/5 - Port Curtis Cross Country
28/5 - Uniform Free Day (Origin)
6/6 **School Athletics**
20/6 - Country Coast Athletics

TERM 3

20/8 -Prep Information
22/8 - School Disco

TERM 4

7/11 P-2 Swim Celebration
9/12 Parent - End of Year Concert
9/12 Awards Evening *
9/12 Year 6 Graduation
10/12- Break Up Day #

*Awards for Year 4 will be at 2:15pm (with Year 3's attending so they understand what the process is for future years), Year 5 at 3:15pm followed by Year 6 Graduation at 4:45.

Breakup day is one day earlier to allow for a staff planning day before clean-up.

Uniforms

The Uniforms can be ordered any time at the office or online via the QKR app. The order will need to be paid for when order is placed and it will be filled on a Thursday and delivered directly to the classroom.

Cash and Eftpos available.

Drop Off and Collection

Parents can escort students to the covered area outside their rooms from 8:30am

Parades are usually fortnightly at the large covered area. Parents are welcome to attend.

All volunteers and visitors to classrooms must sign in at the office.

Teachers open their rooms from 8:50am. Parents should make a booking if interview or meeting is required.

After 3pm parents are not required to sign in if coming into the school grounds for a meeting.

Student Leadership

There are Leadership activities planned for Year 5 and 6 students this year. An invitation is extended to students who have met the schools' behavioural expectations. Some students will have conditional invitations whilst some may need to further demonstrate their ability to attend these extra curriculum activities with a degree of trust in their safety, respect or responsibility.



2025 School Captains

PE News

Port Curtis Trial Dates for 2025 PAPERWORK DUE ONE WEEK BEFORE

As information becomes available for each sport it will be communicated through either letters to students, the Sports Notice Board (located near the tuckshop area) or to the Year 4-6 classes via the Sports Captains. **An email with the significant dates will be sent out.**

Port Curtis Sport – Mouthguard Policy

Since 2019, mouth protection is **MANDATORY** in the following contact sports:

Australian Football (AFL), Hockey, Rugby League and Rugby Union.

They are recommended to be used in Soccer.

The Department of Education strongly recommends that students wear custom-fitted mouthguards.

Wearing an appropriately designed and made mouthguard while participating in sport will protect against dental injuries.

Student medical forms for Port Curtis Sport now acknowledge the mandatory wearing of mouthguards for Australian Football (AFL), Hockey, Rugby League and Rugby Union, and the recommended use of them in Soccer. All parent/carers will have to sign this form stating that they understand and agree to this process. If students are competing in any trials for the above sports, (except soccer) they **MUST** have a mouthguard, or they will be unable to compete.

Term	SPORT	TRIAL DATE
	Netball	Thur 6 th Feb (Wk 2)
1	AFL	Mon 10 th Feb (Wk 3)
	Hockey	Thur 13 th Feb (wk 3)
	Basketball	Thur 13 th Feb (wk 3)
	Squash	Tues 18 th Feb (Wk 4)
	Tennis	Mon 3 rd March (wk 6)
	Soccer Boys & Girls	Thur 6 th March (wk 6)
	U11&12 Rugby League	Fri 7 th Mar (wk 6) during day
	Touch	Thur 13 th March (wk 7)
	U10 Rugby League	Fri 28 th Mar (wk 9) during day
	Softball	Thurs 3 rd April (wk 10)
2	Rugby League GIRLS	Thurs 1 st May (wk 2)
	Cross Country	Wed 7 th May (wk 3)
	Rugby Union	Thurs 8 th May (wk 3)
	Country Coast Athletics	Fri 20 th June (wk 9)
3	Cricket	Thu 17 th July (wk 1)
	Athletics	Tues 29 th /Wed 30 th July (wk 3)

P&C News

The P&C Association would like to welcome all new families and existing families back for 2025.

The P&C meet the **second Tuesday of the month in the staff room** at 6:30pm. The **AGM** will be held at the first meeting for the year on **Tuesday 11th February at 6.30pm**. Please come along and meet the committee and hear about the great plans we have for the future.

Tuckshop – The dedicated volunteers operate the Tuckshop on Fridays. More volunteers are required to keep the Tuckshop running weekly. This week a pizza Meal Deal is being offered. Sales this week occur prior to 2.30pm Thursday, online through the QKR app.



Library News

Welcome back! Most students have already visited the library and either borrowed for home or for their classroom. The year 3 students are very excited to have access to some new areas of the library and the year 6 students all have access to our restricted novels section. It has been awesome to see the students using their waterproof library bags for home borrowing. These bags help to safeguard the books from accidental spillages in school bags. If your child forgets their bag or book on their borrowing day, they are welcome to visit the Library before school (between 8:30 and 8:45am) or during their play breaks to borrow. Books for years 3-6 are able to be borrowed for 2 weeks before they become overdue. Students reading large novels, can bring their books back to the Library and have their loan extended if necessary. Students in Prep-2 are encouraged to return their library books each week.

Book Club Issue 1

Book Club Issue 1 will be sent home with students this week. Participating in Book Club is entirely optional and provides families with an opportunity to purchase popular and new release children's books if they so desire. All orders are due in by the **7th February**. Orders can be made online in 2 easy ways:



1. Download the Scholastic Book Club app from the App Store or Google Play
2. Visit scholastic.com.au/LOOP

***Please note no cash orders; online orders only**

When you order via the app or online loop, there is no need to bring your order forms to school, as your order will be emailed directly to me by Scholastic. Once the orders arrive at school, I will package them up and send them home with the students. All orders placed earn points for our school, which are then converted into books and learning resources.

Happy Reading!

Literacy

One of our aims in improving student learning outcomes is to implement "The Daily 5" which is "a structure that will help students develop the daily habits of reading, writing and working with peers that will lead to a lifetime of independent literacy." (Boushey and Moser)

Our school incorporates the Daily 5 component – 'Read to Self'. This component encompasses three ways to read a book, choosing good fit books, improving muscle memory, using appropriate reading behaviours, building reading stamina and developing independence in reading.

Reading can be improved through two avenues –

- a) choosing 'I Pick' books; and
- b) building reading stamina

'I Pick' is an acronym for.....

- I** - the child chooses the book
- Purpose** - choose according to interest or enjoyment
- Interest** - what the child wants to read because of the content, author or series
- Comprehend** - what words or concepts the child will need to understand to successfully read the book

Know - know the words. If the child is reading a page and has one unknown word, the book is generally too easy. If there are two to four unknown words per page then the book is generally a 'good fit'. If the child has five or more unknown words on the page, then it is best to choose another more appropriate book.

The students are assembling their book boxes and have chosen books using the 'I Pick' strategy. They have also started to build their reading stamina.

Please contact your child's classroom teacher or the support teacher – Janelle McHugh, if you would like more information.

School Crossings

Crossing Supervisors are on duty at the Malpas Street pedestrian crossing from 8:00 am – 9:00 am and 2:50 pm – 3:20 pm.

General Crossing Rules:

- No bikes, skateboards, scooters, roller blades etc are to be ridden on the crossing – WALKING ONLY PERMITTED.
- When approaching the school crossing, there is a white line painted on the path. Children and adults are to remain behind this line until the crossing supervisor has stepped out onto the road and has blown two short whistles to indicate to pedestrians to cross the road.
- If one long whistle is blown; the crossing supervisor is indicating that there is an emergency; and pedestrians are to leave the crossing quickly, without running.

If your child / children are using the school crossing please make them aware of these rules for their safety.

Slow down around our school

With our students returning to classes, parents and carers are being urged to slow down in school zones.

Parents are not to park in the turnaround at collection time within the school grounds.

Pittsbay Crescent – The school side of this area is only short-term parking (2 minute). Police have been known to issue tickets in that location. Parking is not allowed on either footpath

Stop and Go

Teacher Aides have been assigned to help in this area, Cars should be moving to the front and if their child hasn't appeared after 2 minutes, moving on and circling the block to give another car the space for their pick up.

Crossing the road should ONLY occur at the 2 designated points indicated with the traffic 'blisters'.

No stopping in the street and doing pick-ups there. It holds traffic up behind and encourages students not to use the designated crossing points and potentially walk between cars.

Boyne School Playgroup

Boyne School Playgroup started their first session for 2025 this Monday.

Boyne School Playgroup invites all Pre-Prep children to come along and play every Monday 9-11am in the undercover area near the Prep block.

QParents

The QParents web and mobile application provides a more convenient, easier way for parents and legal guardians of Queensland state school students to interact with their child's school. Parents will have secure, online access to their child's student information, anytime, anywhere, through a smartphone, tablet or computer.

QParents allows parents to connect instantly with their child's school to access and manage their child's student information, including:

- Attendance and absence details, as well as the ability to notify the school of an absence
- Behaviour details
- Academic report cards
- Viewing unpaid invoice details, payment history, and making payments online
- Viewing and updating personal student details, including medical conditions and address
- Enrolment details

QParents will assist both staff and parents in sharing and responding to information in an efficient and effective way. We have sent out invitations for parents to register for QParents. Please contact the office if you require your child's EQ ID to register.

More information about QParents can be found at <https://qparents.qld.edu.au/#/about>